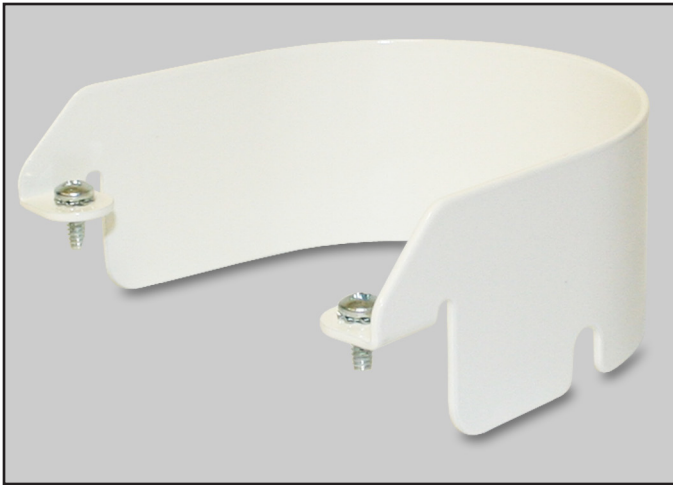
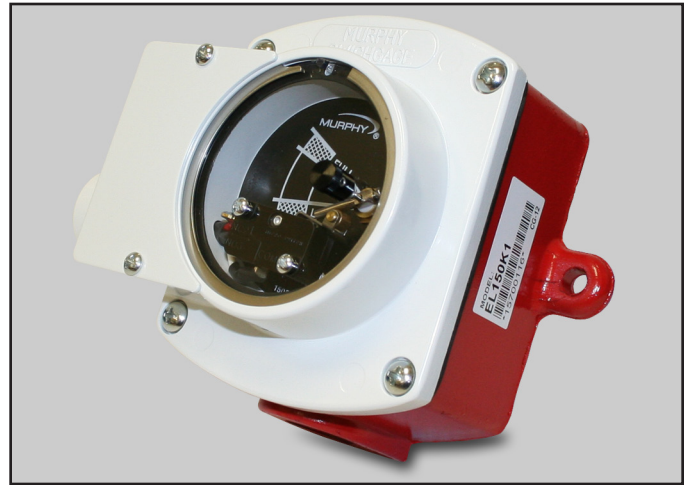


Installation Instructions - EL150K1 Visor Kit



Murphy's Visor Kit includes: one (1) visor assembly, and two (2) screws.



EL150K1 prior to installation of the Visor Kit.



Remove the two (2) small screws from the front of the instrument.



Place the Visor assembly around the dial and line up with the two empty screw holes.



Replace and tighten both screws.



Finished assembly looks like this.